


# Credeon Endpoint Encryption

## Enterprise-grade data security


CEE delivers enterprise-grade data security for desktop and laptop computers.

- ◆ AES 256 encryption
- ◆ FIPS 140-2 validated
- ◆ CC certification (in progress)
- ◆ Support for HDD, SSD, and Removable media

**Certification**



FIPS 140-2  
VALIDATED

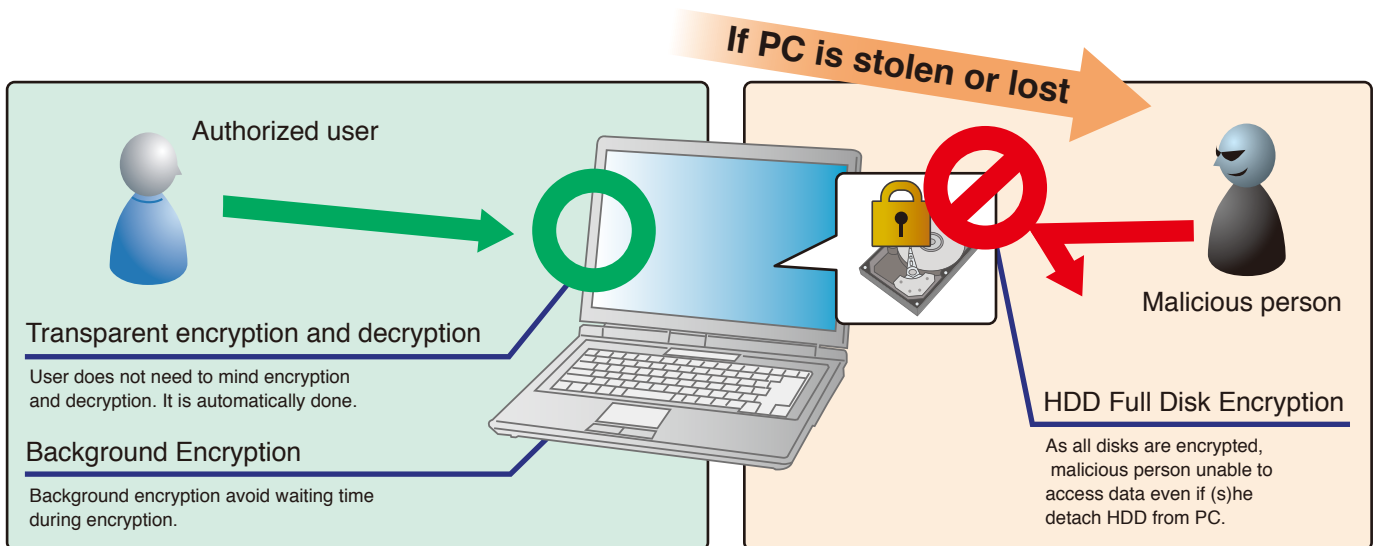


JCMVP  
VALIDATED

-FIPS 140-2 Inside  
-Certificate Numbers: 1696, 1697, 1698

-JCMVP Certified Module Inside  
-Certificate Numbers: J0015, J0016, J0017  
-Security Level: 1

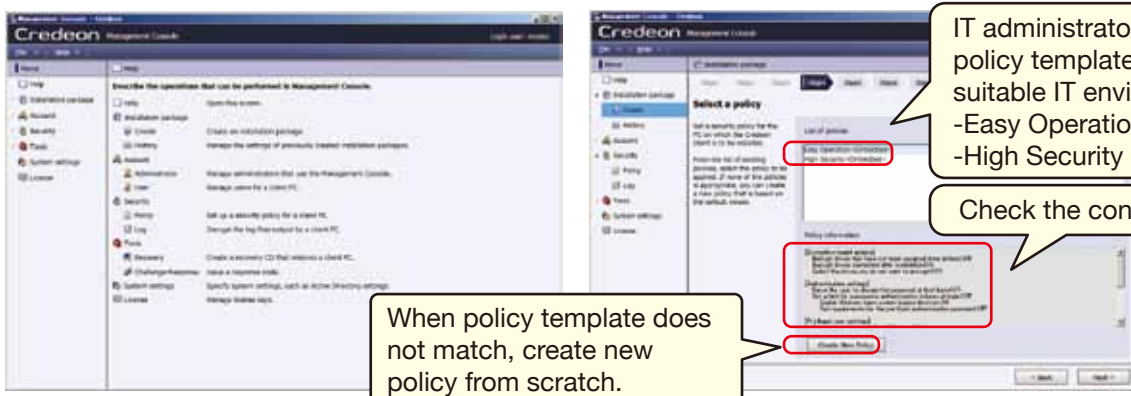
All disks are encrypted with FIPS140-2 Validated Cryptographic Module. When employee's PC is stolen or lost, the data on PC is surely protected.



## Overview

### 1. Ease of Management

A single console provides full control over defining security policies, building Client Installation Packages, tracking encryption status, and collecting recovery profile. Also four level of management roles are available(Master/ Deployment/ Maintenance/ Audit)



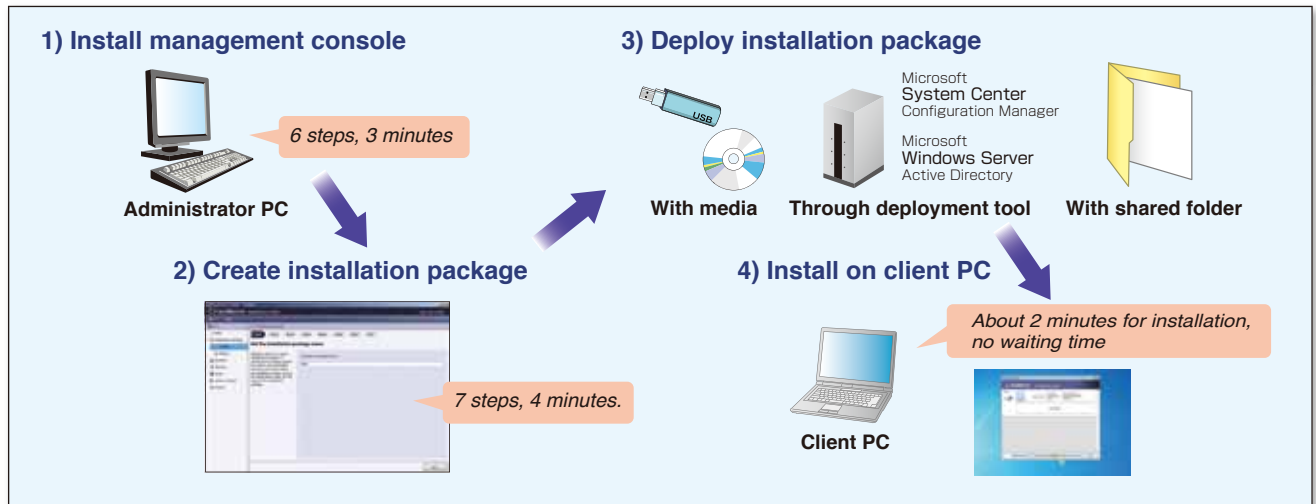
IT administrator select policy template that is suitable IT environment:  
-Easy Operation  
-High Security

Check the content of policy

When policy template does not match, create new policy from scratch.

## 2. Installs in Minutes

Only a few minutes are needed for IT to create Installation Package and distribute through deployment tools such as SCCM (Microsoft System Center Configuration Manager.)



## 3. Flexible & Reliable Recovery

When a hard drive fails, IT can use Credeon's dual recovery profiles to dramatically increase their chances of recovering the compromised disk.

## 4. User Experience

Once installed, Credeon automatically starts its full disk encryption and completes it in background. Pre-boot authentication also protect data.

### Specs

#### Management Console

Operating System	Microsoft Windows XP (x86)
	Microsoft Windows Vista (x86 and X64)
	Microsoft Windows 7 (x86 and X64)
	Microsoft Windows Server 2003 (x86 and X64)
	Microsoft Windows Server 2003 R2 (x86 and X64)
	Microsoft Windows Server 2008 (x86 and X64)
CPU	Any Intel or AMD processor that supports 32- or 64-bit operation
RAM	The minimum memory required by the OS
HDD	650 MB minimum free disk space for installation
	500 MB minimum free disk space for operation

#### Credeon Endpoint Encryption(Client PC)

Operating System	Microsoft Windows XP (x86)
	Microsoft Windows Vista (x86 and X64)
	Microsoft Windows 7 (x86 and X64)
CPU	Any Intel or AMD processor that supports 32- or 64-bit operation
RAM	For Windows XP More than 512 MB
	For Windows Vista or Windows 7 The minimum memory required by the OS
HDD	300 MB minimum free disk space for installation
	400 MB minimum free disk space for operation

This product meets eight criteria, energy conservation, resources saving, reusability, etc, defined by Hitachi Group's DfE (Design for Environment) Assessment. Credeon Endpoint Encryption can help reduce server resource by Server-less designing, workload for operation, and labor of implementing security measures by encrypting client PC.

\* Credeon is a registered trademark in Japan and other countries of Hitachi Solutions, Ltd.

\* Other products and company names mentioned in this document are the trademarks or registered trademarks of their respective owner.

\* Neither the text nor the figures given here use TM or R marks.

\* The product specifications are subject to change without notice for enhancement.

\* Exporters intending to transport this product must observe the Foreign Exchange and Foreign Trade Act of Japan, export control laws of the USA, and other applicable regulations, and follow the necessary formalities. If you have any questions, please contact our sales representative.

For questions and inquiries regarding our products and services, contact:

### Hitachi Solutions, Ltd.

4-12-7 Higashi-Shinagawa, Shinagawa, Tokyo, 140-0002, Japan

e-mail: [hs-credeon-inquiry@ml3.hitachi-solutions.com](mailto:hs-credeon-inquiry@ml3.hitachi-solutions.com) URL: <http://www.hitachi-solutions.com/credeon/>

### Hitachi Solutions America, Ltd

601 Gateway Blvd Suite 100, South San Francisco, CA 94080, U.S.A.

e-mail: [hs-credeon-inquiry@ml3.hitachi-solutions.com](mailto:hs-credeon-inquiry@ml3.hitachi-solutions.com) URL: <http://credeon.hitachisolutions-us.com/>

 **Hitachi Solutions, Ltd.**

This catalog is made of recycled paper to protect natural resources.

H24S-01-01 | 2013.03